

## Pancake Jacks - Threaded Ram With Safety Lock Nut And Tilt Saddle, Single Acting, Load Return

Capacity 50 - 1200 ton / Stroke 45 - 50 mm / Max. Working Pressure 700 bar



### Features / Application

- Used in low clearance confined area
  - Ideally suited for precision lifting, alignment of machinery, heavy structures and girders requiring sustained load holding
- Note:** Don't over stroke, no mechanical Ram stopper

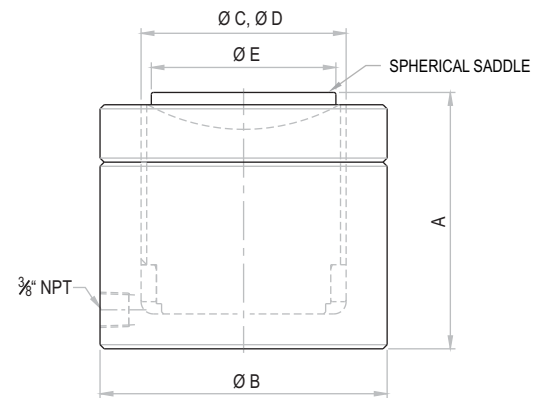


**Caution**

Incase of over stroke, the oil will leak from the top.

**Caution**

Provide a level and solid support for entire jack base area & saddle top since the ram guide length is small.



**OLTVL Series** - **O** Orione **L** Single acting Load return **T** Threaded ram **VL** Very Low height **50** Capacity - ton **50** Stroke - mm

Capacity (ton)	Capacity (kN)	Stroke (mm)	Model	Effective area (cm <sup>2</sup> )	Oil cap. (cc)	Closed height A (mm)	Cylinder OD B (mm)	Bore dia. C (mm)	Ram dia. D (mm)	Saddle dia. E (mm)	Saddle max. tilt angle	Wt. (Approx.) (kg)
50	550	50	OLTVL 50-50	78.5	393	125	140	100	100	90	5°	14.2
100	1077	50	OLTVL 100-50	153.9	770	140	180	140	140	125	5°	25.4
150	1589	45	OLTVL 150-45	227.0	1022	150	220	170	170	160	5°	44
200	2199	45	OLTVL 200-45	314.2	1414	155	255	200	200	180	5°	57
250	2661	45	OLTVL 250-45	380.1	1710	160	280	220	220	200	5°	77
300	3167	45	OLTVL 300-45	452.4	2036	170	310	240	240	220	4°	98
400	4008	45	OLTVL 400-45	572.6	2577	180	350	270	270	250	4°	128
500	4948	45	OLTVL 500-45	706.9	3181	195	400	300	300	290	3°	186
800	7939	45	OLTVL 800-45	1134.1	5104	245	505	380	380	340	3°	369
1000	9930	45	OLTVL 1000-45	1418.6	6384	260	560	425	425	380	3°	475
1200	12405	45	OLTVL 1200-45	1772.1	7974	280	600	475	475	400	3°	590

- Higher capacity and customized solutions on request. ■ Specifications are subject to change due to continual improvement.
- Capacity and Stroke specified are maximum safe limits. As safe practice, use at 80% of rating.

### CUSTOMISED SOLUTIONS

