

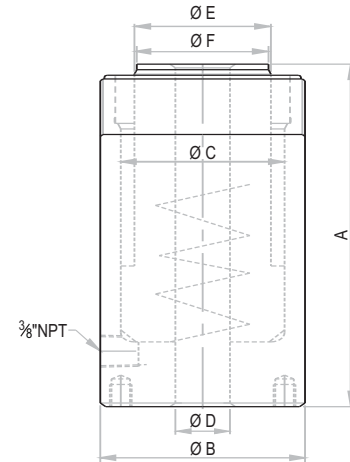
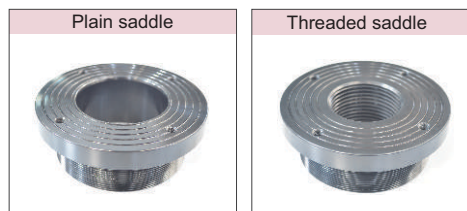
Hollow Ram Jack - Plain Ram, Single Acting, Spring Return

Capacity 10 - 100 ton / Stroke 50 - 150 mm / Max. Working Pressure 700 bar



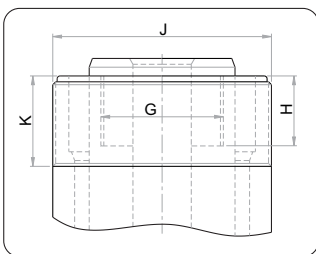
Features / Application

- As hydraulic puller with mechanical attachments
- Removal and assembly of pins, bushes, bearings, sprockets, gears and general maintenance

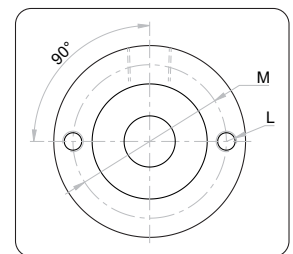


OSH Series - **O** Orione **S** Single acting **S** Spring return **H** Hollow ram **10** Capacity - ton **50** Stroke - mm

Capacity	Capacity	Stroke	Model	Effective area	Oil cap.	Closed height	Cylinder OD	Bore dia.	C'hole dia.	Ram dia.	Saddle dia.	Wt. (Approx.)
(ton)	(kN)	(mm)		(cm ²)	(cc)	A (mm)	B (mm)	C (mm)	D (mm)	E (mm)	F (mm)	(kg)
10	110	50	OSH 10-50	15.7	79	150	75	60	20	50	50	3.7
10	110	75	OSH 10-75	15.7	118	175	75	60	20	50	50	4.2
10	110	100	OSH 10-100	15.7	157	200	75	60	20	50	50	4.7
20	231	50	OSH 20-50	33.0	165	155	105	85	27	75	73	8
20	231	100	OSH 20-100	33.0	330	205	105	85	27	75	73	10.5
20	231	150	OSH 20-150	33.0	495	255	105	85	27	75	73	12.5
30	298	50	OSH 30-50	42.6	213	175	115	95	33	80	78	10.5
30	298	75	OSH 30-75	42.6	320	200	115	95	33	80	78	11.5
30	298	100	OSH 30-100	42.6	426	225	115	95	33	80	78	12.5
30	298	150	OSH 30-150	42.6	639	275	115	95	33	80	78	14.5
50	550	75	OSH 50-75	78.5	589	210	150	125	42	100	97	21
50	550	100	OSH 50-100	78.5	785	235	150	125	42	100	97	22
60	605	75	OSH 60-75	86.4	648	225	165	135	54	110	107	26
60	605	100	OSH 60-100	86.4	864	250	165	135	54	110	107	28.5
60	605	150	OSH 60-150	86.4	1296	300	165	135	54	110	107	33
100	990	75	OSH 100-75	141.4	1060	245	215	180	77	150	146	45
100	990	100	OSH 100-100	141.4	1414	270	215	180	77	150	146	48.5



Model	Ram internal thread G	Thread depth H (mm)	Collar threads J	Length K (mm)	Bottom hole size L	PCD x No. of holes M
OSH 10	M42x2P	22	M75x2P	30	M8x15	60x2
OSH 20	M56x2P	23	M105x2P	36	M10x17	85x2
OSH 30	M64x2P	30	M115x2P	40	M10x17	90x2
OSH 50	M80x2P	30	M150x3P	40	M12x18	125x2
OSH 60	M90x2P	33	M165x3P	45	M12x20	135x2
OSH 100	M120x2P	40	M215x3P	50	M16x24	180x2



- Higher capacity and customized solutions on request. Specifications are subject to change due to continual improvement.
- Capacity and Stroke specified are maximum safe limits. As safe practice, use at 80% of rating.

CUSTOMISED SOLUTIONS

