

# Low Height Jacks - Plain Ram, Single Acting, Spring Return

Capacity 10 - 200 ton / Stroke 30 - 60 mm / Max. Working Pressure 700 bar



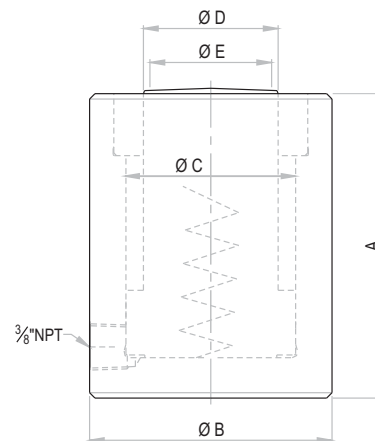
### Features / Application

- Ideal for applications with low clearance
- Heavy equipment lifting and alignment



### Caution

Provide a level and solid support for entire jack base area & saddle top since the ram guide length is small.



**OSL Series** - **O** Orione **S** Single acting Spring return **L** Low height Jack **10** Capacity - ton **30** Stroke - mm

Capacity (ton)	Capacity (kN)	Stroke (mm)	Model	Effective area (cm <sup>2</sup> )	Oil cap. (cc)	Closed height A (mm)	Cylinder OD B (mm)	Bore dia. C (mm)	Ram dia. D (mm)	Saddle dia. E (mm)	Wt. (Approx.) (kg)
10	111	30	OSL 10-30	15.9	48	90	70	45	35	-	2.3
20	218	50	OSL 20-50	31.2	160	115	90	63	50	-	4.9
30	309	50	OSL 30-50	44.2	221	120	100	75	60	-	6
50	550	60	OSL 50-60	78.5	471	125	130	100	80	60	11
75	792	60	OSL 75-60	113.1	679	145	155	120	95	70	18.4
100	1077	60	OSL 100-60	153.9	925	150	180	140	110	80	23.6
150	1589	60	OSL 150-60	227.0	1362	165	220	170	140	100	43
200	2199	60	OSL 200-60	314.2	1885	200	255	200	160	110	66

- Higher capacity and customized solutions on request. ■ Specifications are subject to change due to continual improvement.
- Capacity and Stroke specified are maximum safe limits. As safe practice, use at 80% of rating.

### CUSTOMISED SOLUTIONS

