

# ODH



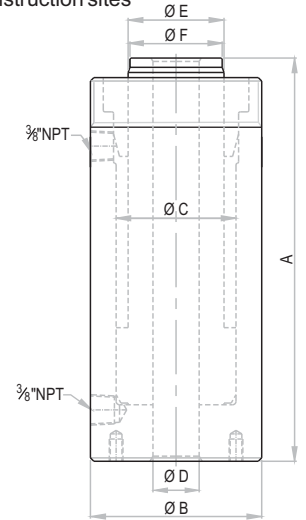
## Hollow Ram Jack - Plain Ram, Double Acting, Oil Return

Capacity 10 - 150 ton / Stroke 50 - 150 mm / Max. Working Pressure 700 bar



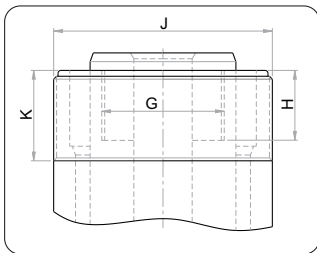
### Features / Application

- As hydraulic pullers with mechanical accessories for removing and assembling bearing bushes, pins, cylinder liners, pulling tubes of heat exchangers, gears and flanges of machinery
- As Bar / pre-stressing jacks at construction sites

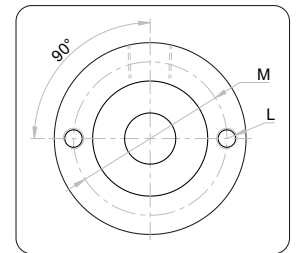


**ODH Series** - **O** Orione **D** Double acting Oil return **H** Hollow ram **10** Capacity - ton **75** Stroke - mm

Capacity (ton)	Capacity (kN)	Stroke (mm)	Model	Effective area (cm <sup>2</sup> )	Oil cap. (cc)	Closed height A (mm)	Cylinder OD B (mm)	Bore dia. C (mm)	C'hole dia. D (mm)	Ram dia. E (mm)	Saddle dia. F (mm)	Wt. (Approx.) (kg)
10	103	75	ODH 10-75	14.7	110	195	75	50	20	40	38	5.5
10	103	100	ODH 10-100	14.7	147	220	75	50	20	40	38	6
20	202	50	ODH 20-50	28.9	144	185	100	70	27	60	58	12
20	202	100	ODH 20-100	28.9	289	235	100	70	27	60	58	14.5
20	202	150	ODH 20-150	28.9	433	285	100	70	27	60	58	17
30	309	50	ODH 30-50	44.2	221	200	115	85	33	70	67	13.5
30	309	100	ODH 30-100	44.2	442	250	115	85	33	70	67	16
30	309	150	ODH 30-150	44.2	663	300	115	85	33	70	67	19
50	528	100	ODH 50-100	75.4	754	260	140	110	42	90	87	28
60	641	75	ODH 60-75	91.6	687	245	155	125	54	100	97	27.5
60	641	100	ODH 60-100	91.6	916	270	155	125	54	100	97	30
60	641	150	ODH 60-150	91.6	1373	320	155	125	54	100	97	34.5
100	1093	75	ODH 100-75	156.1	1171	270	210	170	77	130	125	53
100	1093	100	ODH 100-100	156.1	1561	295	210	170	77	130	125	57
150	1649	150	ODH 150-150	235.6	3534	350	245	200	80	150	147	95



Model	Ram internal thread G	Thread depth H (mm)	Collar threads J	Length K (mm)	Bottom hole size L	PCD x No. of holes M
ODH 10	M30x2P	30	M75x2P	30	M8x12	60x2
ODH 20	M42x2P	30	M100x3P	30	M10x17	75x2
ODH 30	M52x2P	35	M115x3P	40	M10x17	90x2
ODH 50	M68x2P	40	M140x3P	40	M12x20	110x2
ODH 60	M72x2P	40	M155x3P	40	M12x20	125x2
ODH 100	M95x2P	50	M210x3P	50	M16x24	165x2
ODH 150	M105x2P	50	M245x4P	50	M16x24	200x2



- Higher capacity and customized solutions on request. Specifications are subject to change due to continual improvement.
- Capacity and Stroke specified are maximum safe limits. As safe practice, use at 80% of rating.

### CUSTOMISED SOLUTIONS

